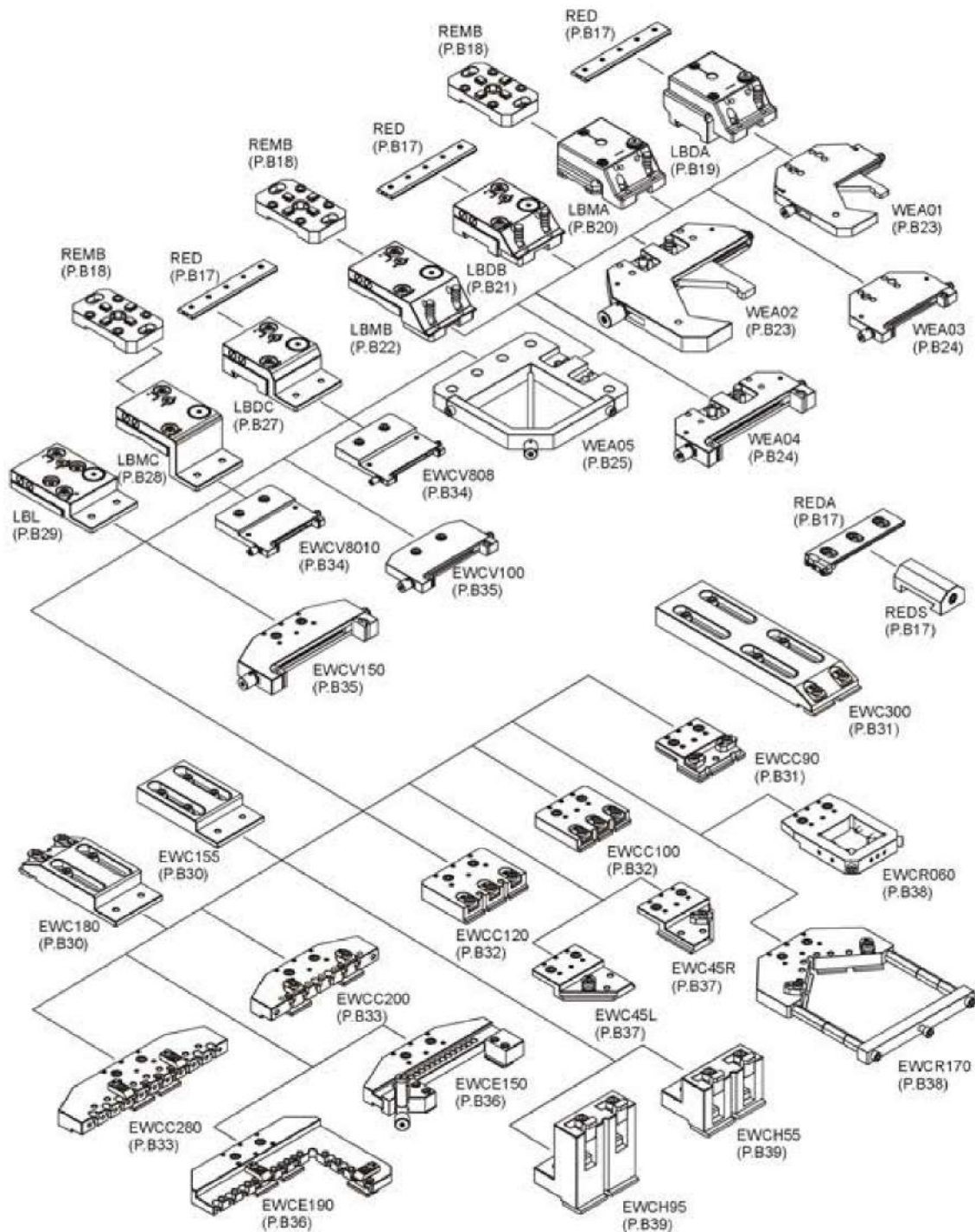


EWC Wire EDM Clamp System



EWC

Wire EDM Extensions Clamp

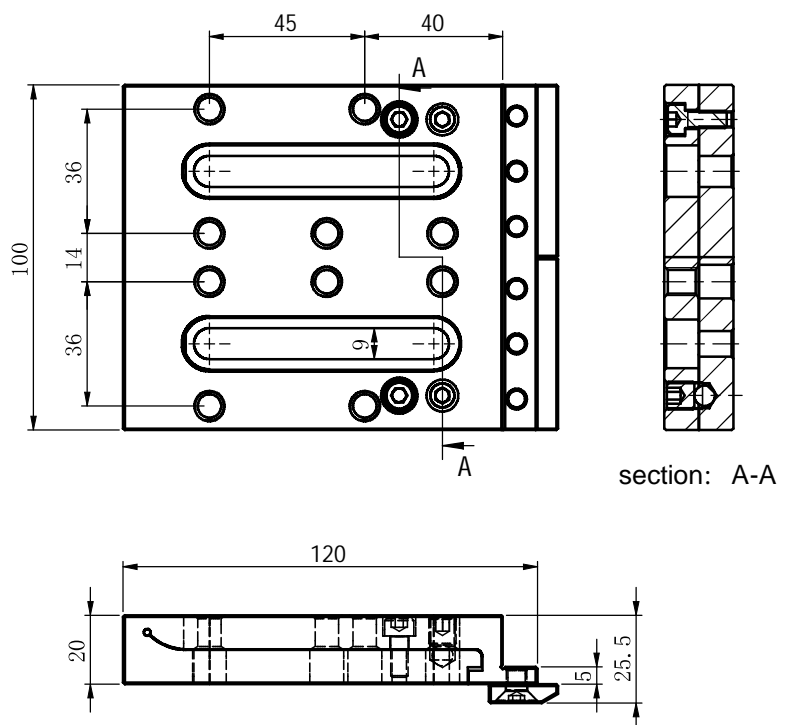
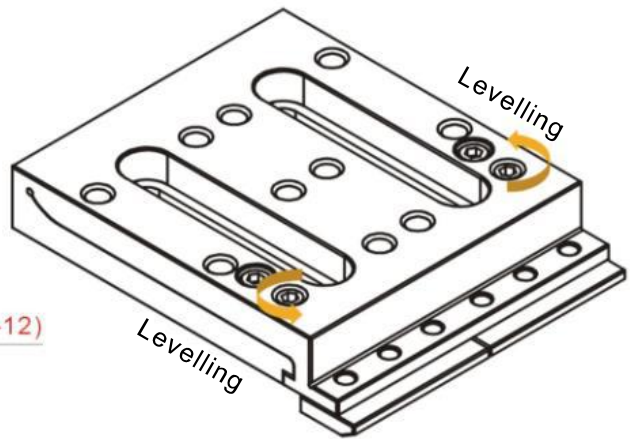
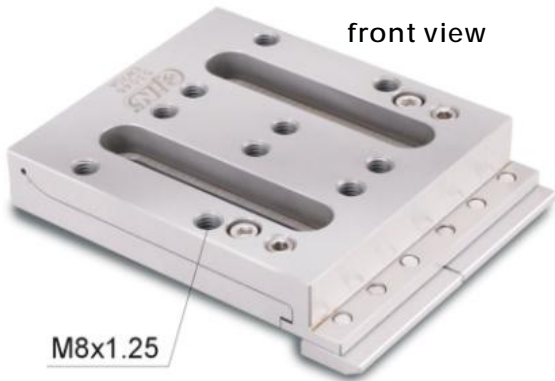
53046

EW70A >> Levelling Extension Clamp

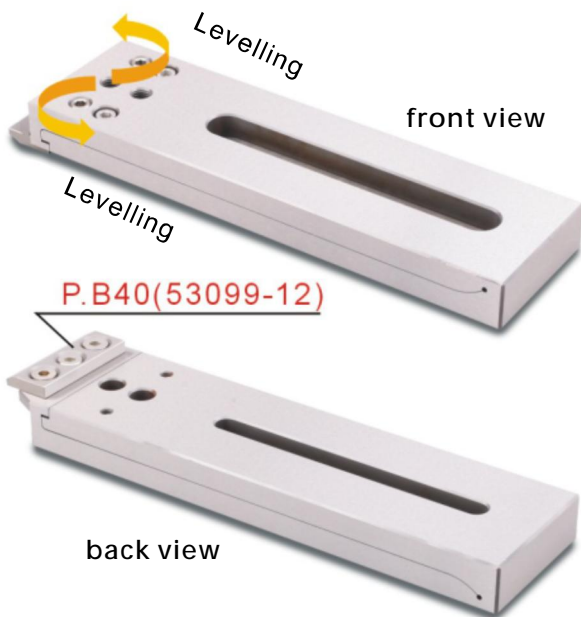
Features:

- ▶ Adopting stainless steel with Sub-zero Treatment after Vacuum Heat Treatment, stable and distortion free.
- ▶ Based on the type of WEDM machines and workpiece applied, it can make various combinations.

Material	SUS440
Hardness	HRC50°-55°
Parallelism	within 0.003mm/100mm
Squareness	within 0.005mm/100mm



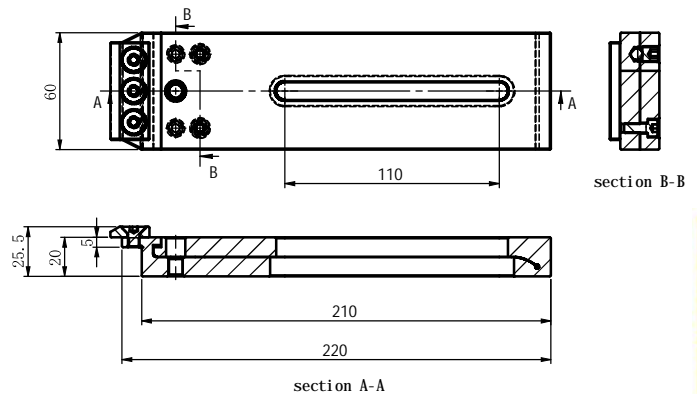
53047 EW90A Wire EDM Extension Clamp



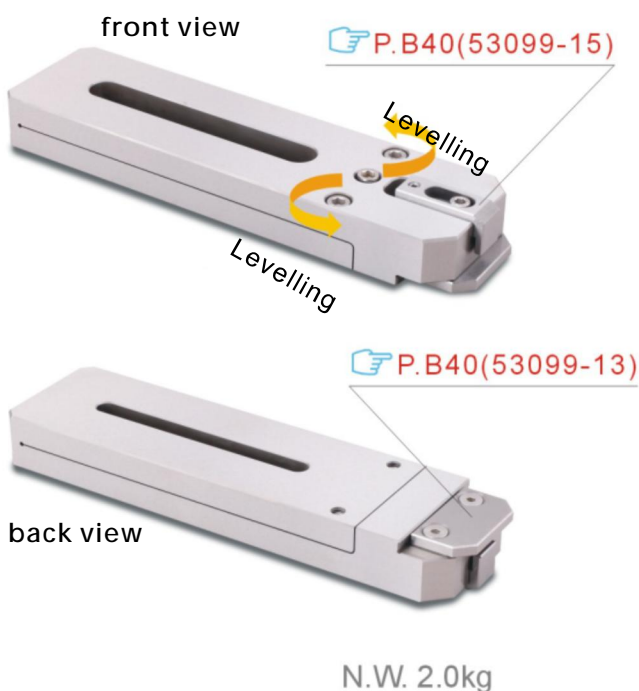
Features:

- ▶ Adopting stainless steel with Sub-zero Treatment after Vacuum Heat Treatment, stable and distortion free.
- ▶ Based on the type of WEDM machines and workpiece applied, it can make various combinations.

Material	SUS440
Hardness	HRC50°-55°
Parallelism	within 0.003mm/100mm
Squareness	within 0.005mm/100mm



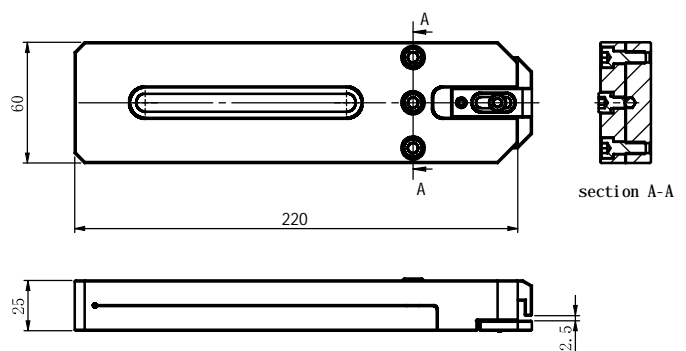
53048 EW90B Wire EDM Extensions Clamp



Features:

- ▶ Adopting stainless steel with Sub-zero Treatment after Vacuum Heat Treatment, stable and distortion free.
- ▶ Based on the type of WEDM machines and workpiece applied, it can make various combinations.

Material	SUS440
Hardness	HRC50°-55°
Parallelism	within 0.003mm/100mm
Squareness	within 0.005mm/100mm

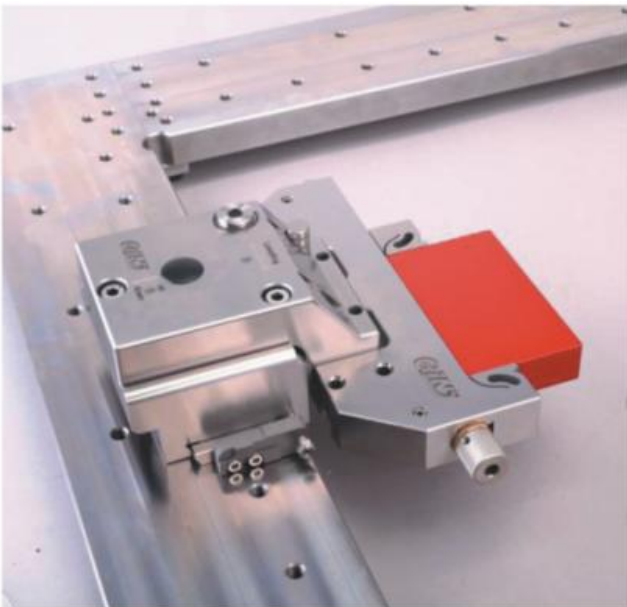


EWC Wire EDM Clamp System

EWC Reference System

WEDM positions the workpiece on the zero line in the machine's working area. Whether the workpiece is rectangular or round, small or large, thin or thick, tall or short, it is clamped with minimal risk of collision. There are infinitely many possible combinations in the product range, EWC Clamp System breaks the limitation being the user's imagination.

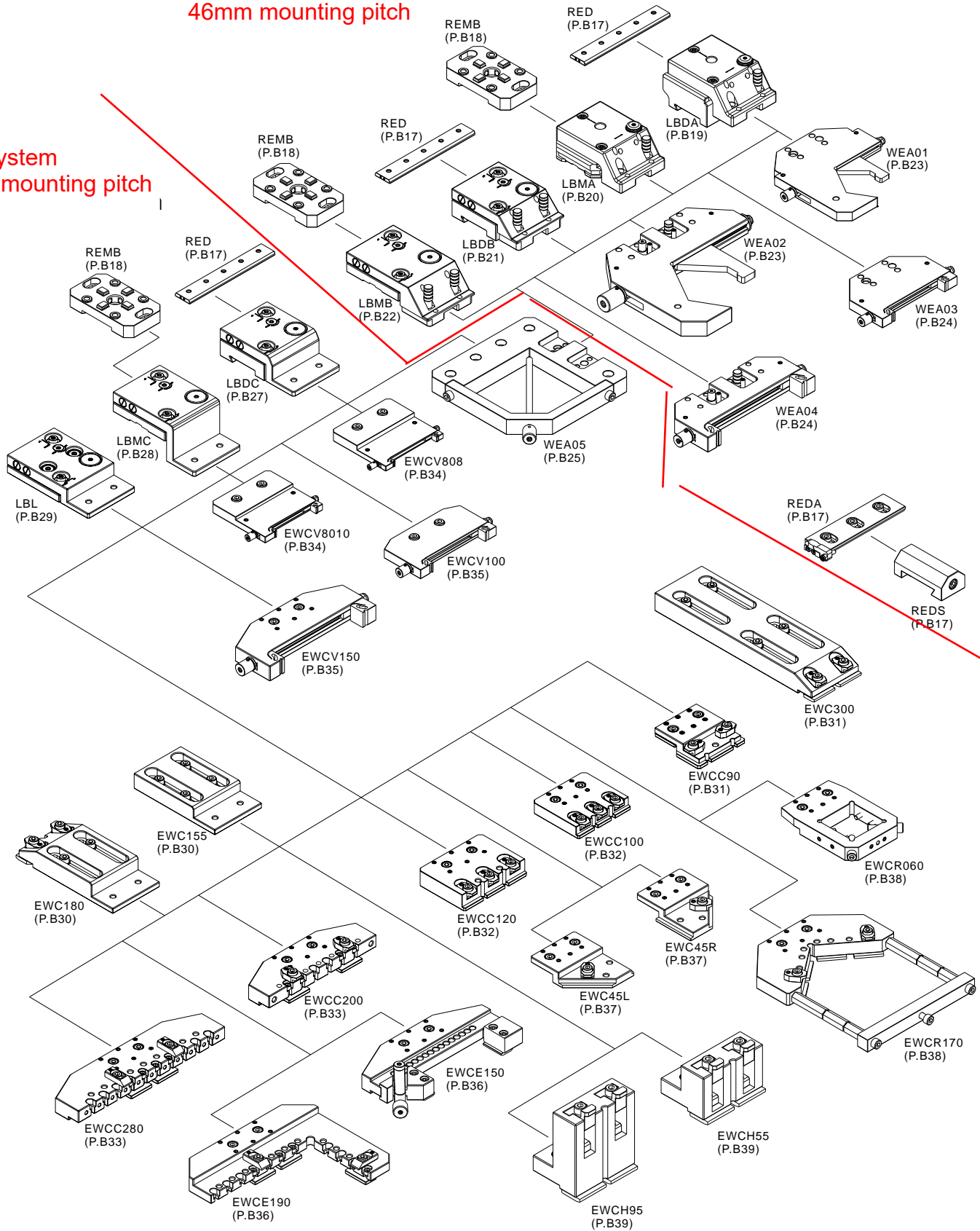
- ▶ Exceptional flexibility
- ▶ Accurately ground-in references
- ▶ Repeatable accuracy
- ▶ Double-sided parallel references



OVERVIEW OF EWC CLAMP SYSTEM.

System 3R compatible
46mm mounting pitch

EWC system
48 mm mounting pitch



WIRE CUM EXTENSIONS CLAMP

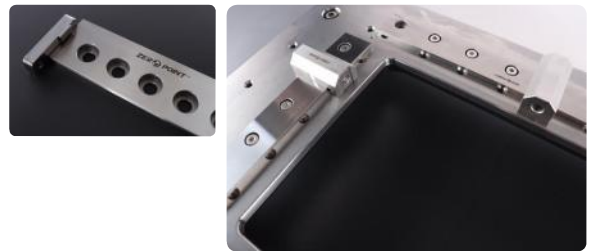
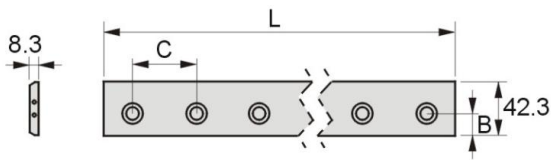
EWC Wire EDM Clamp System

53071 RED Reference Element



Features:

- Reference elements for machines with zero-line table. The length (L), hole spacing (C) and hole edge spacing (B) of the hardened reference



Unit:mm

Order No.	Model	L	C	B	N.W.
53071-100	RED-100	100	50	17	0.26kg
53071-145	RED-145	145	50	17	0.38kg
53071-245	RED-245	245	50	17	0.65kg
53071-345	RED-345	345	50	17	0.92kg
53071-445	RED-445	445	50	17	1.19kg

WIRE EDM

53071-A REDA Reference element

Reference element

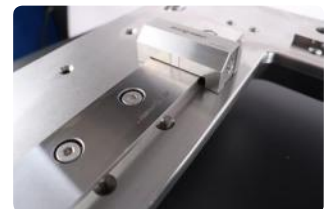
- Universal 150 mm reference element with oval holes. Supplied with end stops.



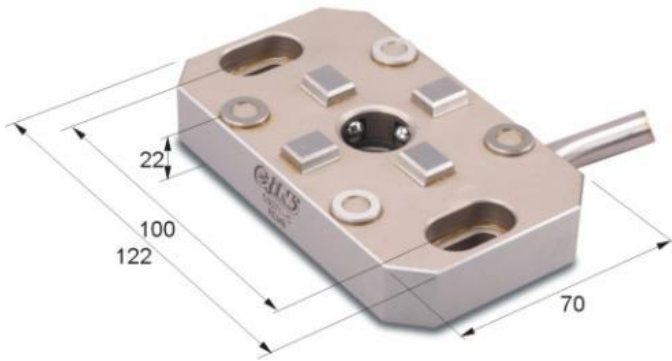
53071-B REDS Reference stopper

Reference stopper

- Can be moved steplessly along the entire reference element.



53071-C REMB Zero Point Macro chuck



Features:

- ▶ Mechanical chuck for a direct fit to the Z=0 base of the WEDM center.
- ▶ On WEDM centers with manual workpieceloading. Base for Clamping element ZERO POINT series or System 3R compatible
- ▶ To be fitted on machine table and Presetting equipment.
- ▶ Repeatability 0.002mm
- ▶ Max Load 1.5kg
- ▶ With a manually operated ball lock.
- ▶ Manual chuck with lever for LBMA/MB/MC.
- ▶ Built-in latch function

Macro chuck on worktable



With Zero Point series



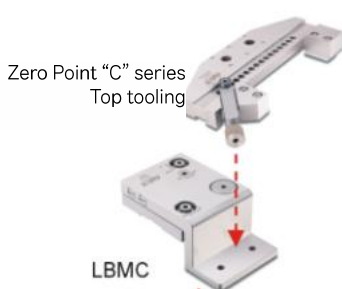
With System3R or Compatible



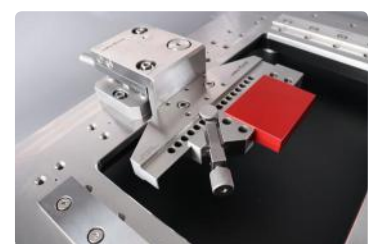
WIDE EDM EXTENSIONS CLAMP

Application | Zero Point Clamping system

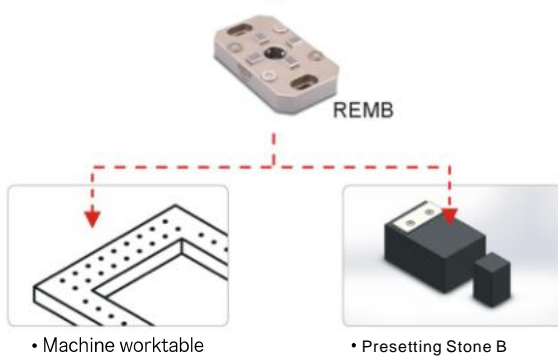
With Zero Point "C" series



With System3R or Compatible



• With Zero Point Series Top tooling



• System 3R compatible

Wire EDM Extensions Clamp

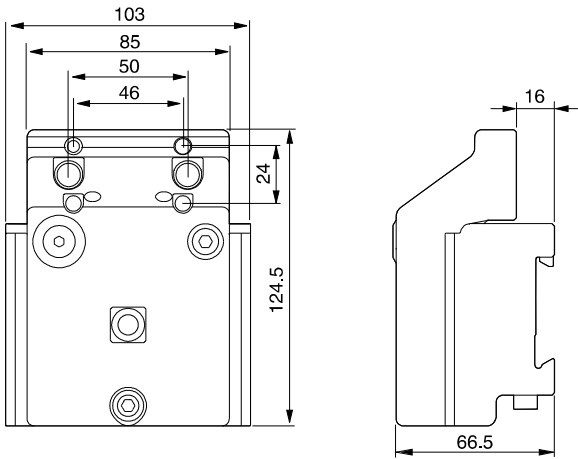
53072

LBDA

Leveling Base



N.W. 3.1kg



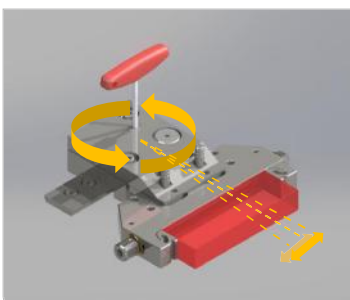
Features:

- ▶ Adopting stainless steel with Sub-zero Treatment after Vacuum Heat Treatment, stable and distortion free.
- ▶ Standard element for System3R and Compatible
- ▶ Base for Clamping element of system 3R Compatible
- ▶ To be fitted on System 3R compatible base.
- ▶ Parallelism: within 0.003mm/100mm
- ▶ Squareness: within 0.005mm/100mm
- ▶ Should be used in conjunction with a reference block

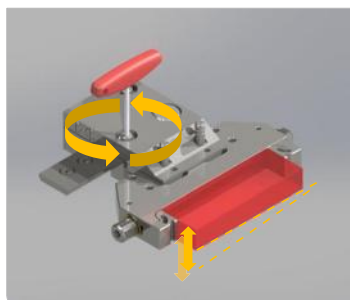
Example of Leveling base with fixture:



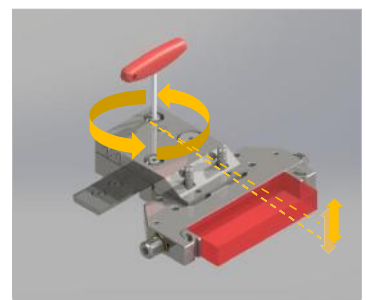
C axis - aligning



ZX axis - aligning



ZY axis - aligning



53073

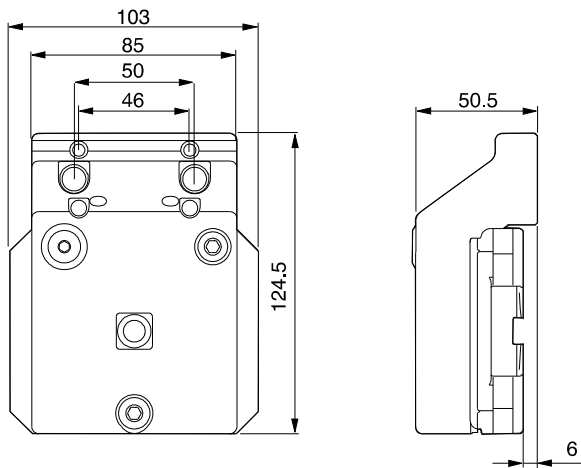
LBMA Leveling Base



N.W. 2.8kg

Features:

- ▶ Adopting stainless steel with Sub-zero Treatment after Vacuum Heat Treatment, stable and distortion free.
- ▶ Standard element for System3R and Compatible
- ▶ Base for Clamping element of system 3R Compatible
- ▶ To be fitted on System 3R compatible base.
- ▶ Parallelism: within 0.003mm/100mm
- ▶ Squareness: within 0.005mm/100mm
- ▶ Should be used in conjunction with a reference block

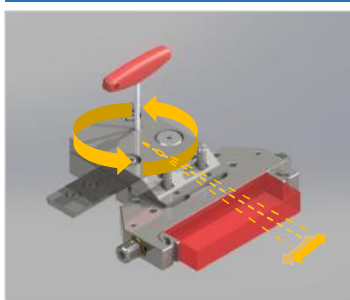


WIDE CLAMP EXTENSIONS CLAMP

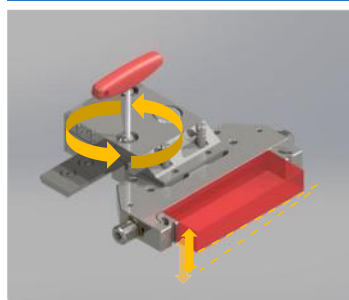
Example of Leveling base with fixture:



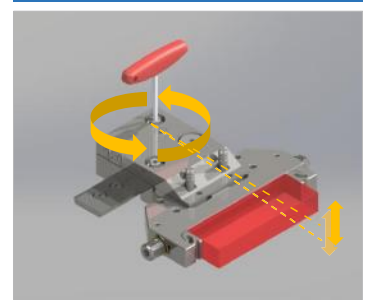
C axis - aligning



ZX axis - aligning



ZY axis - aligning

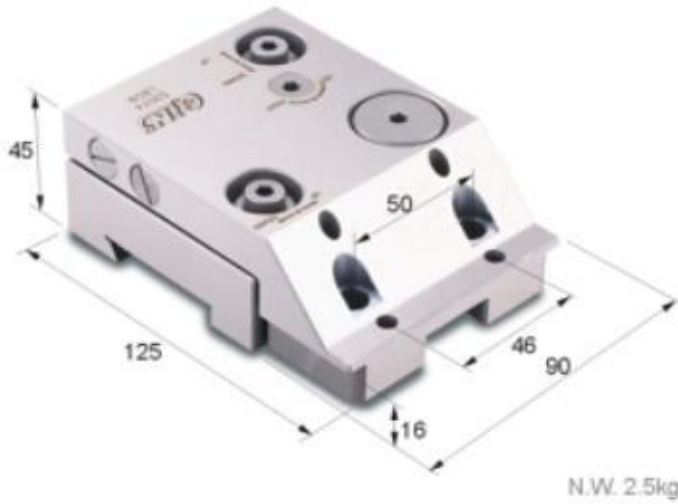


Wire EDM Extensions Clamp

53074

LBDB

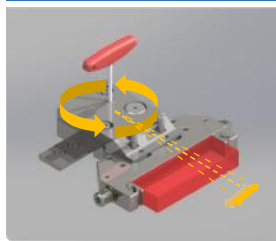
Leveling Base



Features:

- ▶ Standard element for System3R and Compatible
- ▶ Base for Clamping element of system 3R Compatible
- ▶ To be fitted on System 3R compatible base.
- ▶ Max. Load 10kg
- ▶ Adjustable in the ZX,ZY plane and C-axis by fine adjust screws.

C axis - aligning



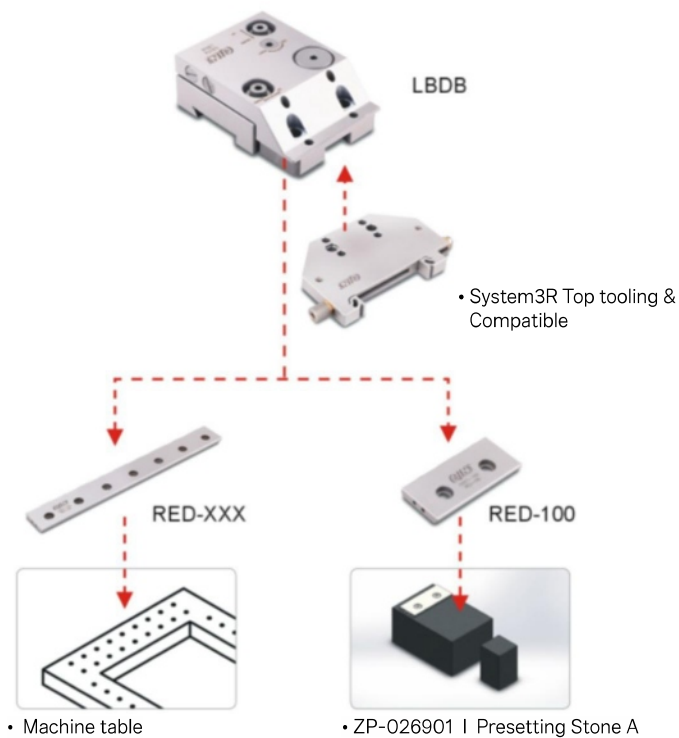
ZX axis - aligning



ZY axis - aligning



▶ Application | For System3R or Compatible



- Preset in three axes - Setup done in seconds



Presetting on Stone A



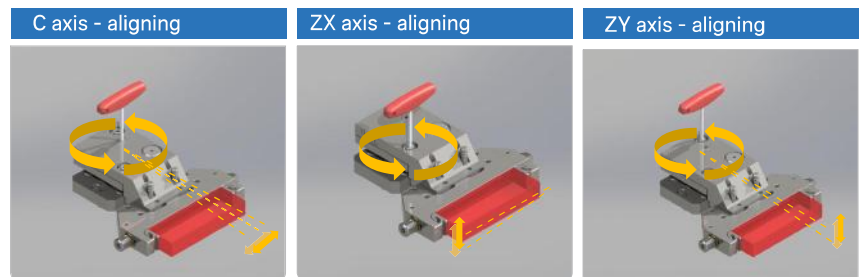
On Machine table

53075 LBMB Leveling Base



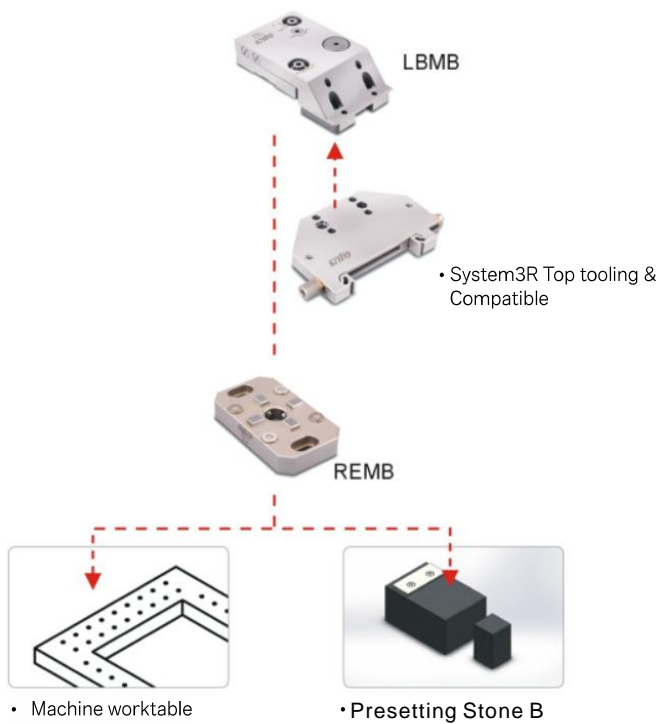
Features:

- ▶ Standard element for System3R and Compatible
- ▶ Base for Clamping element of system 3R Compatible
- ▶ To be fitted on System 3R compatible base.
- ▶ Max. Load 10kg
- ▶ Adjustable in the ZX,ZY plane and C-axis by fine adjust screws.



WIDE CUM EXTENSIONS CLAMP

▶ **Application** | For System3R or Compatible



- Preset in three axes - Setup done in seconds



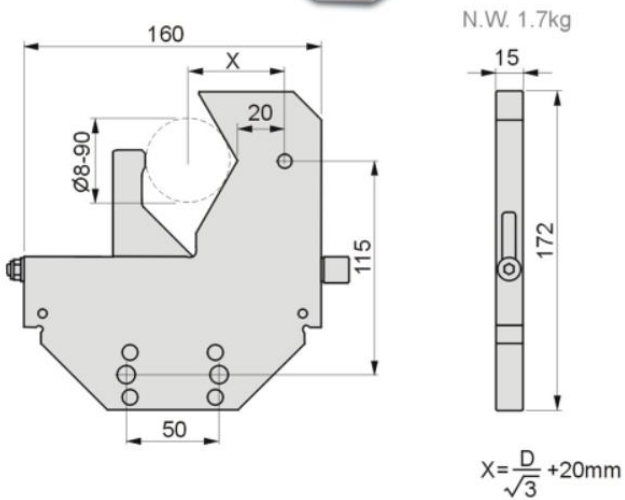
Presetting on Stone B



On Machine table

Wire EDM Extensions Clamp

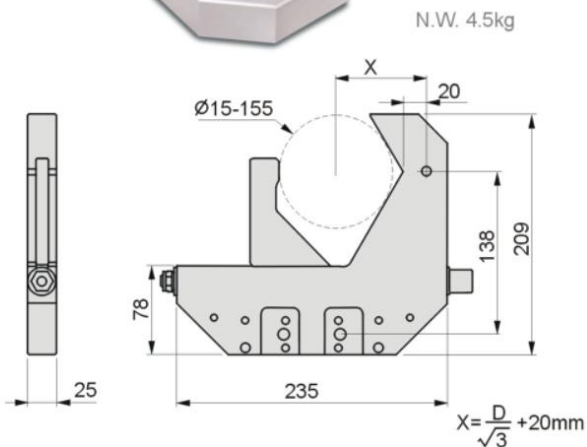
53076-01 WEA01 Precision Wire-Cut Vise



Features:

- ▶ Fit with levelling base LBDA/DB/MA/MB.
- ▶ Hole pattern (c-c 50mm) enables direct fitting to table.
- ▶ Tightening torque 8 Nm
- ▶ Recommended Max. workpiece weight 7 kg

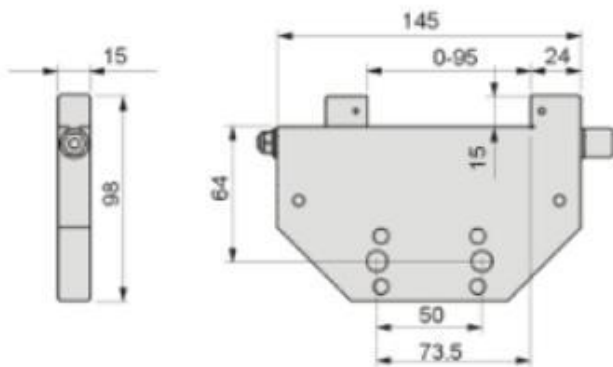
53076-02 WEA02



Features:

- ▶ Fit with levelling base LBDA/DB/MA/MB.
- ▶ Hole pattern (c-c 50mm) enables direct fitting to table.
- ▶ Tightening torque 8 Nm
- ▶ Recommended Max. workpiece weight 12 kg

53076-03 WEA03 Precision Wire-Cut Vise

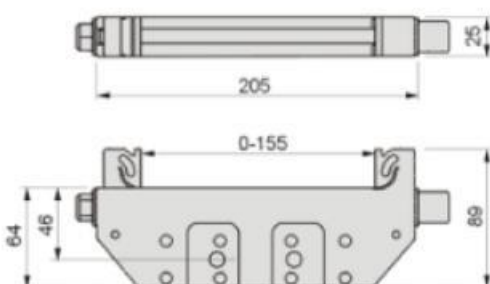


Features:

- ▶ Fit with levelling base LBDA/DB/MA/MB.
- ▶ Hole pattern (c-c 50mm) enables direct fitting to table.
- ▶ Tightening torque 7 Nm

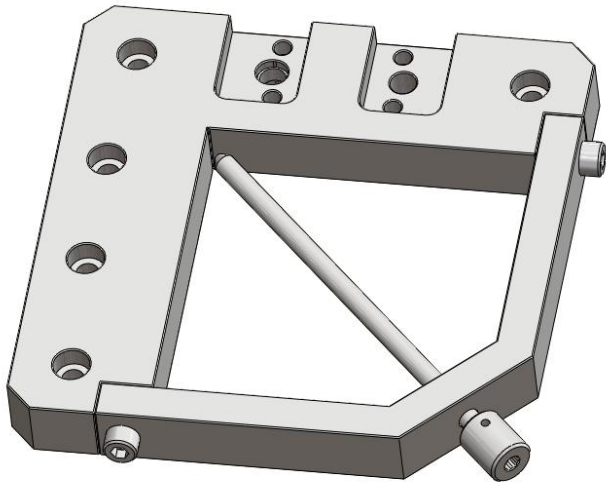
WIRE CUT EXTENSIONS CLAMP

53076-04 WEA04



Features:

- ▶ Fit with levelling base LBDA/DB/MA/MB.
- ▶ Hole pattern (c-c 50mm) enables direct fitting to table.
- ▶ Tightening torque 15 Nm



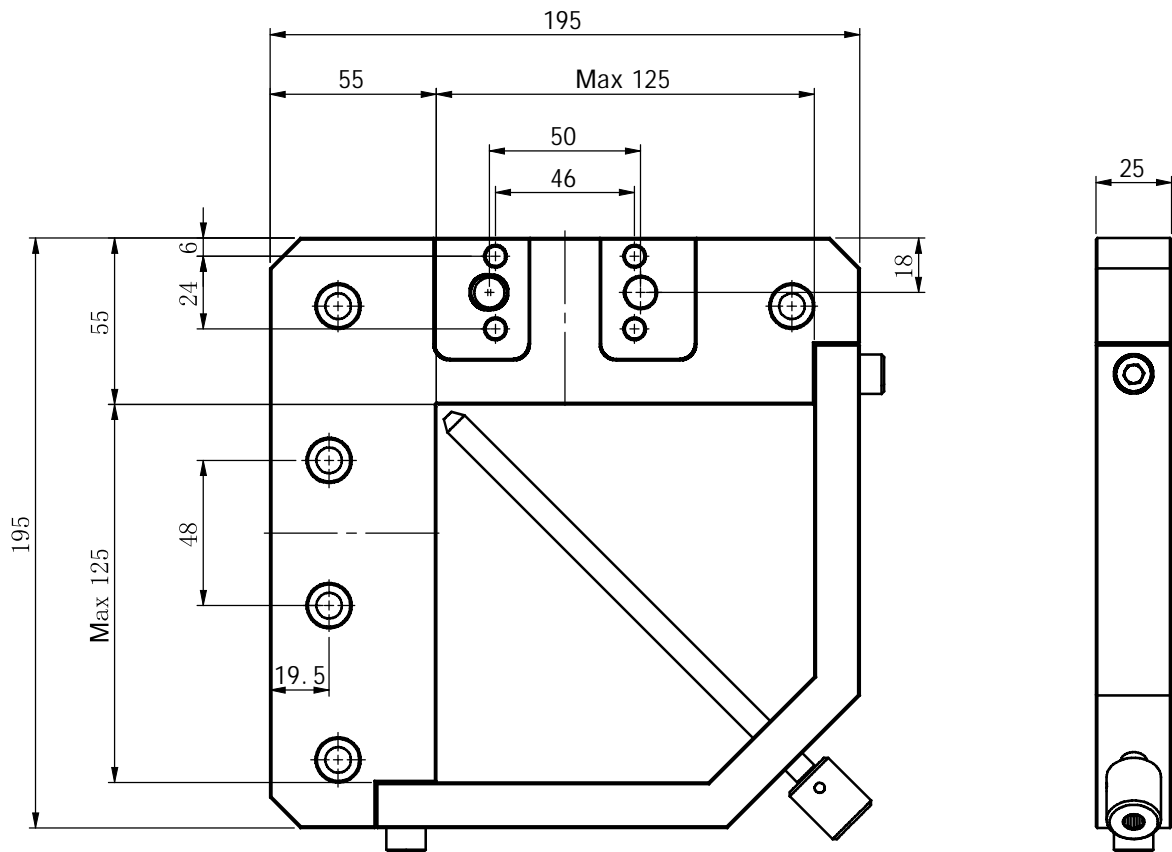
Features:

- ▶ Adopting stainless steel with Sub-zero Treatment after Vacuum Heat Treatment, stable and distortion free.
- ▶ Based on the type of WEDM machines and workpiece applied, it can make various combinations.
- ▶ Clamping range: $\varnothing 4\sim 125\text{mm}$

Material	SUS440
Hardness	HRC50°-55°
Parallelism	within 0.003mm/100mm
Squareness	within 0.005mm/100mm

N.W.4.0kg

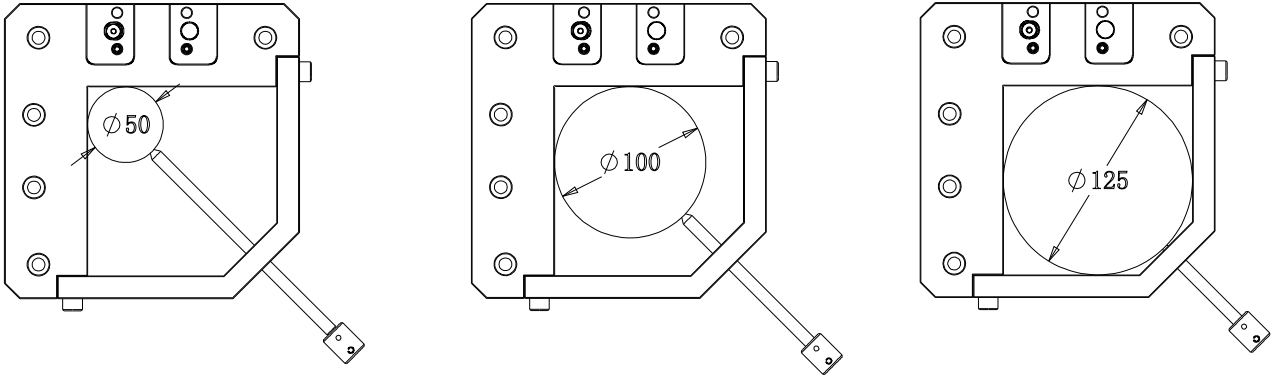
WIRE EDM



Wire EDM Extensions Clamp

Overview WEA05 application

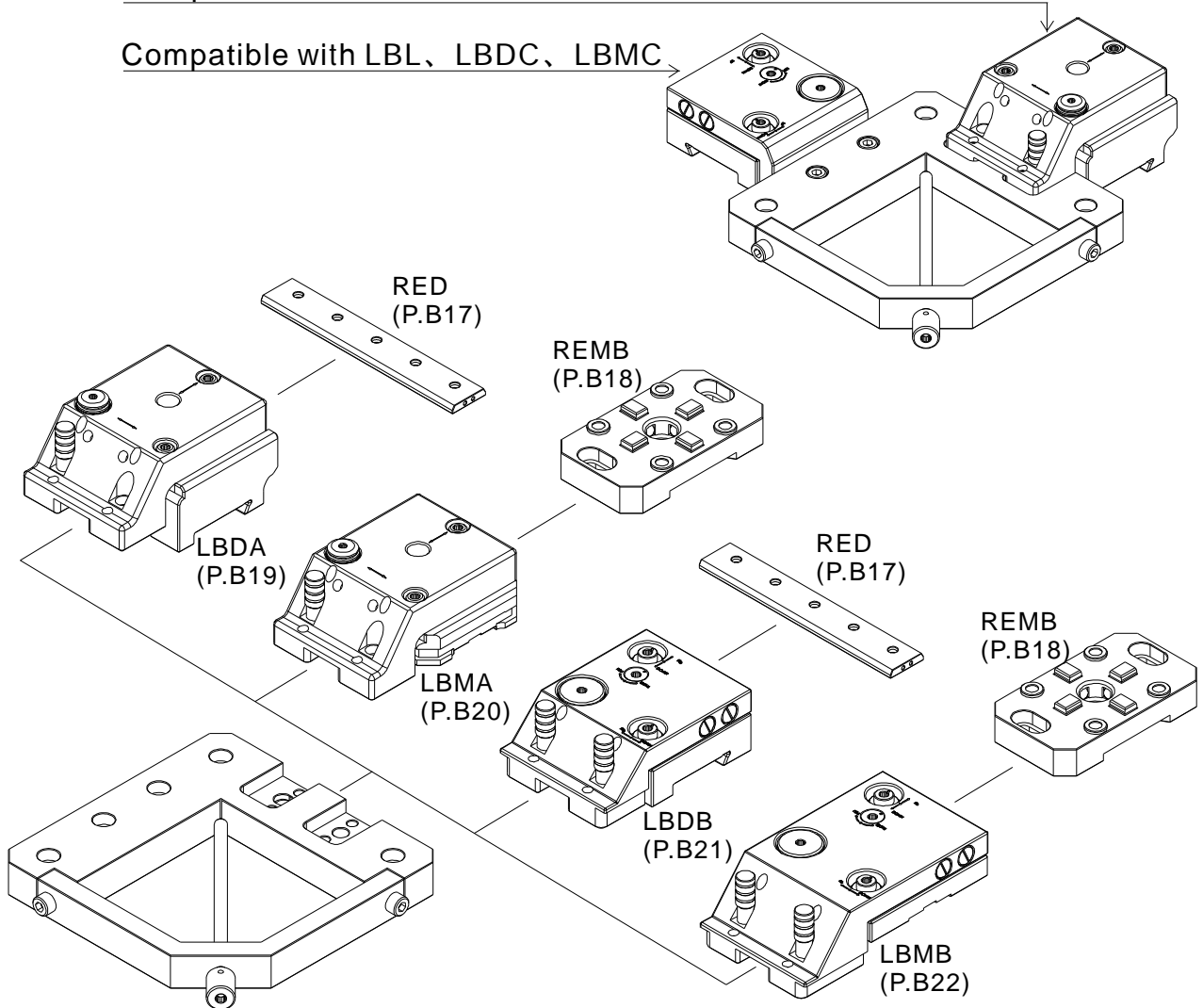
Clamping range Demo: (3 screws)



► 應用 : Zero Point Clamping system

Compatible with LBDA, LBDB, LBMA, LBMB

Compatible with LBL, LBDC, LBMC



Wire EDM Extensions Clamp

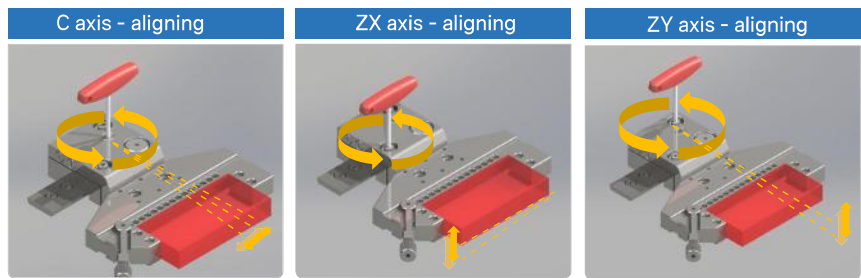
53077 LBDC Leveling Base



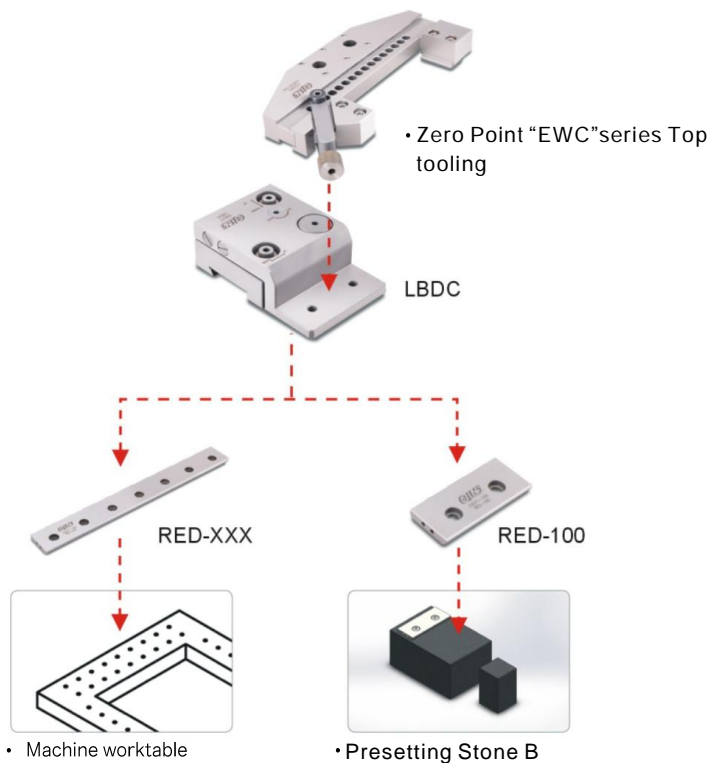
Features:

- ▶ Standard element for EWC-series
- ▶ Base for Clamping element of EWC-series
- ▶ To be fitted Machine table
- ▶ Max. Load 10kg
- ▶ Adjustable in the ZX,ZY plane and C-axis by fine adjust screws.

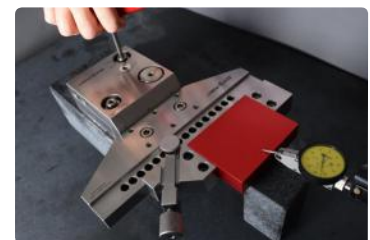
WIRE EDM



▶ Application | For Zero Point "EWC" series



- Preset in three axes - Setup done in seconds

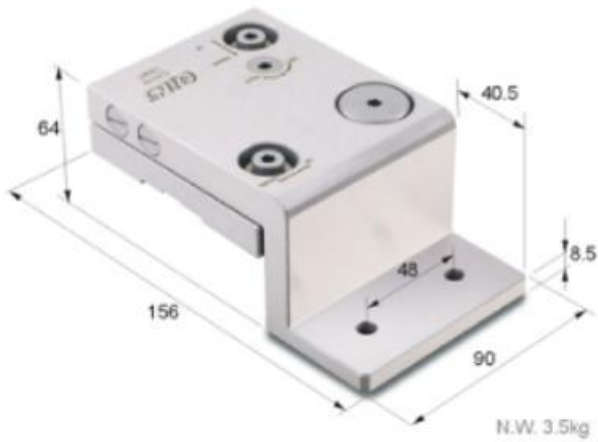


Presetting on Stone A



On Machine table

53078 **LBMC** **Leveling Base**



Features:

- ▶ Standard element for EWC-series
- ▶ Base for Clamping element of EWC-series
- ▶ To be fitted Machine table
- ▶ Max. Load 10kg
- ▶ Adjustable in the ZX,ZY plane and C-axis by fine adjust screws.



WIDE CUM EXTENSIONS CLAMP

▶ Application | For Zero Point "EWC" series



- Preset in three axes - Setup done in seconds



Presetting on Stone B



On Machine table

Wire EDM Extensions Clamp

53079

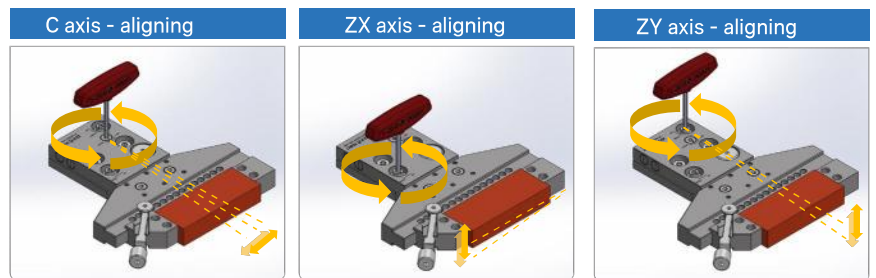
LBL

Leveling Base



Features:

- ▶ Standard element for EWC-series
- ▶ Base for Clamping element of EWC-series
- ▶ To be fitted to Machine table
- ▶ Max. Load 10kg
- ▶ Adjustable in the ZX,ZY plane and C-axis by fine adjust screws.



53080 EWC155 >> Fix Base



Features:

- ▶ Standard element for EWC-series
- ▶ Base for Clamping element of EWC-series
- ▶ To be fitted to Machine table
- ▶ Max. Load 20kg



WIDE COLUMN EXTENSIONS CLAMP

53081 EWC180 >> Fix Base & Clamp



Features:

- ▶ Standard element for EWC-series. Clamps workpieces in up-down direction.
- ▶ Base for Clamping element of EWC-series. Use one, two or four unit of clamping unit, can clamp from small to medium workpiece. Bottom level of workpiece Z=0 or +5mm.
- ▶ To be fitted to Machine table.
- ▶ Max. Load 10kg.



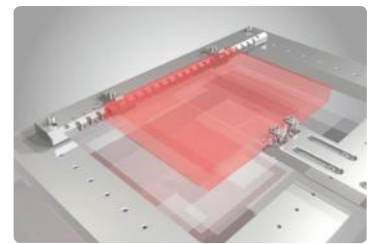
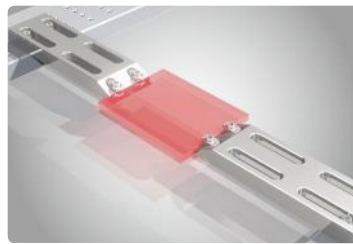
Wire EDM Extensions Clamp

53082

EWC300 >> Wire EDM Extension Clamp

Features:

- ▶ Standard element for EWC-series. Clamps workpieces in up-down direction.
- ▶ Use one, two or four unit of clamping unit, can clamp from small to medium workpiece. Bottom level of workpiece Z=0 or +5mm.
- ▶ To be fitted to Machine table.
- ▶ Max. Load 10kg.



53083

EWCC90 >> Leveling Clamp

Features:

- ▶ Standard element with clips for one-sided attachment to workpieces.
- ▶ Bottom level of workpiece Z=0 or +5mm.
- ▶ To be fitted to the fix base B.
- ▶ Range: 70x70x50mm
- ▶ Max. Load 4kg.
- ▶ Adjustable in the ZX and ZY plane using six pieces of screws.



53084 EWCC100 Leveling Clamp



Features:

- ▲ Clamping element with clips for one-sided attachment to workpieces
- ▲ Clamp workpiece in down direction. Bottom level of workpiece: $Z = +5\text{mm}$
- ▲ To be fitted to the fix base C or Leveling base 3D
- ▲ Range: $120 \times 120 \times 70\text{mm}$
- ▲ Max. Load 5kg
- ▲ With Fix base; Adjustable in the ZX and ZY plane using six pieces of screws.
- ▲ With Leveling Base: Adjustable in the ZX,ZY plane and C-axis by adjust screws on Leveling Base 3D.

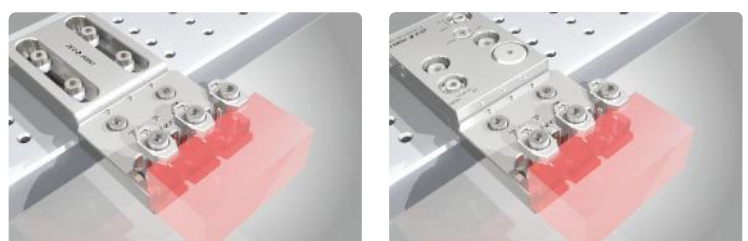


53085 EWCC120 Leveling Clamp



Features:

- ▲ Clamping element with clips for one-sided attachment to workpieces
- ▲ Clamp workpiece in down direction. Bottom level of workpiece : $Z = 0$ or $+5\text{mm}$
- ▲ To be fitted to the fix base C or Leveling base 3D
- ▲ Range: $150 \times 150 \times 100\text{mm}$
- ▲ Max. Load 10kg
- ▲ With Fix base; Adjustable in the ZX and ZY plane using six pieces of screws.
- ▲ With Leveling Base: Adjustable in the ZX,ZY plane and C-axis by adjust screws on Leveling Base 3D.



Wire EDM Extensions Clamp

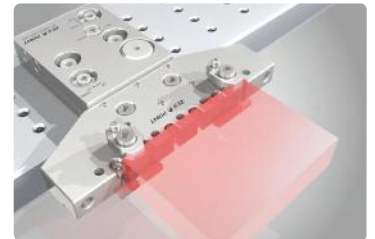
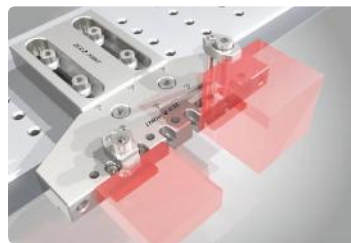
53086

EWCC200 Leveling Clamp



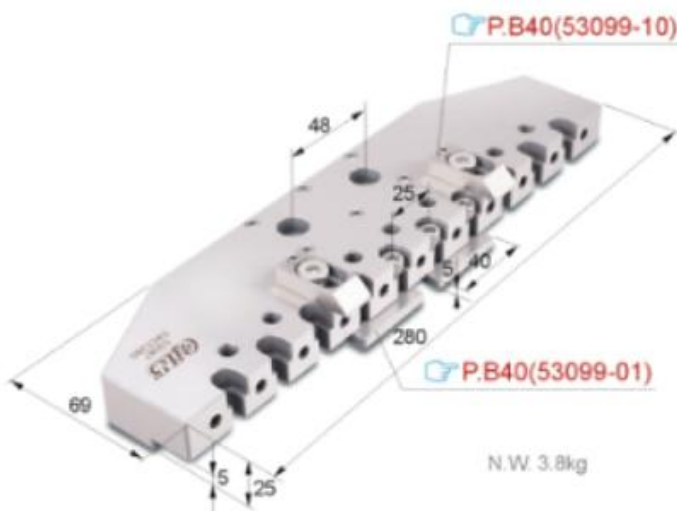
Features:

- ▶ Clamping element with clips for one-sided attachment to workpieces. Clamp workpiece in down direction.
- ▶ Bottom level of workpiece: Z=0 or +5mm
- ▶ To be fitted to the fix base C or Leveling base 3D
- ▶ Range: 200×150×100mm
- ▶ Max. Load 10kg
- ▶ With Fix base; Adjustable in the ZX and ZY plane using six pieces of screws.
- ▶ With Leveling Base: Adjustable in the ZX,ZY plane and C-axis by adjust screws on Leveling Base 3D.



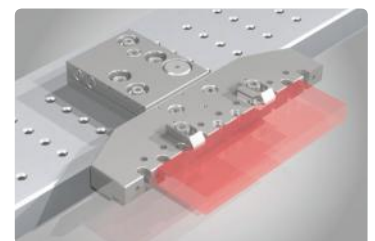
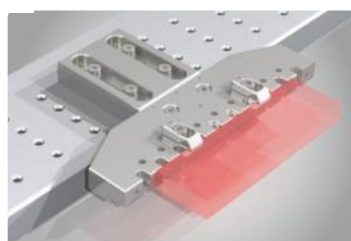
53087

EWCC280 Leveling Clamp



Features:

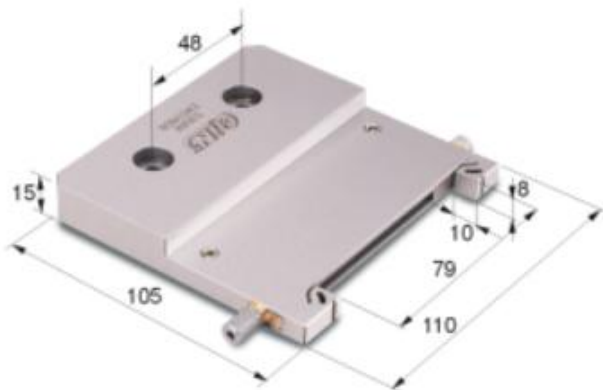
- ▶ Clamping element with clips for one-sided attachment to workpieces. Clamp workpiece in down direction.
- ▶ Bottom level of workpiece : Z=0 or +5mm
- ▶ To be fitted to the fix base C or Leveling base 3D
- ▶ Range: 280×150×100mm
- ▶ Max. Load 10kg
- ▶ Beam vise single clamping elements.



53088

EWCV808

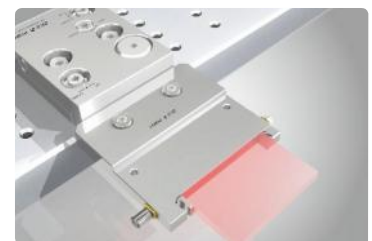
Wire EDM Vise



N.W. 0.7kg

Features:

- ▶ One movable and one fixed jaw, ground and corrosion-resistant.
- ▶ Lateral clamping of workpieces of 0~79mm machined from the outside.
- ▶ To be fitted to the Leveling base 3D
- ▶ Range: 0~79mm
- ▶ Max. Load 1kg
- ▶ Adjustable in the ZX,ZY plane and C-axis by adjust screws.
- ▶ on the Leveling Base 3D, Maximum tightening torque: 4Nm



WIRE EDM EXTENSIONS CLAMP

53089

EWCV8010

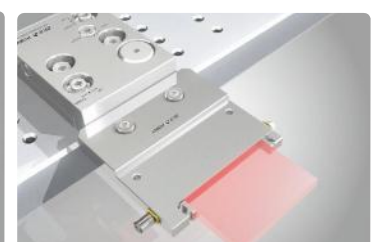
Wire EDM Vise



N.W. 0.8kg

Features:

- ▶ One movable and one fixed jaw, ground and corrosion-resistant.
- ▶ Lateral clamping of workpieces of 0-75mm machined from the outside.
- ▶ To be fitted to the Leveling base 3D
- ▶ Range: 0~75mm
- ▶ Max. Load 2kg
- ▶ Adjustable in the ZX,ZY plane and C-axis by adjust screws.
- ▶ on the Leveling Base 3D, Maximum tightening torque: 4Nm

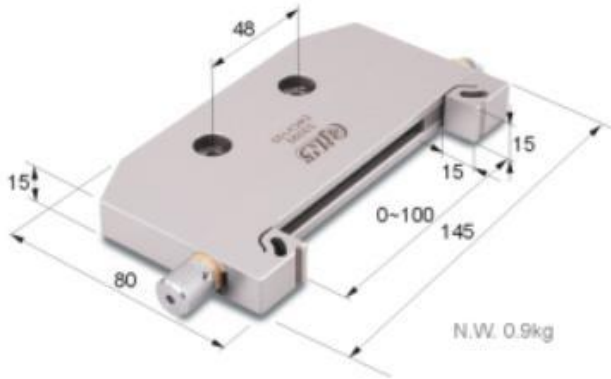


Wire EDM Extensions Clamp

53090

EWCV100

Wire EDM Vise



Features:

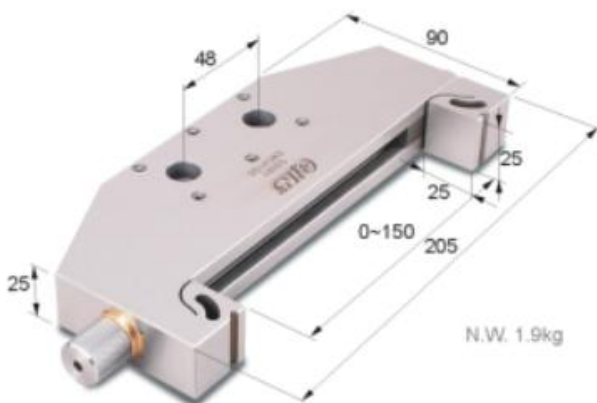
- ▲ One movable and one fixed jaw, ground and corrosion-resistant.
- ▲ Lateral clamping of workpieces of 0-100mm machined from the outside.
- ▲ To be fitted to the Leveling base 3D.
- ▲ Range: 0-100mm
- ▲ Max. Load 3kg
- ▲ Adjustable in the ZX,ZY plane and C-axis by adjust screws.
- ▲ on the Leveling Base 3D. Maximum tightening torque: 7Nm



53091

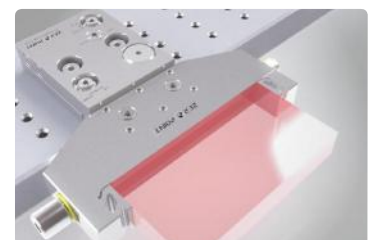
EWCV150

Leveling Wire EDM Vise



Features:

- ▲ One movable and one fixed jaw, ground and corrosion-resistant.
- ▲ Lateral clamping of workpieces of 0-150mm machined from the outside.
- ▲ To be fitted to the fix base C or Leveling base 3D.
- ▲ Range: 0-150mm
- ▲ Max. Load 10kg
- ▲ With Fix base; Adjustable in the ZX and ZY plane using six pieces of screws.
- ▲ With Leveling Base: Adjustable in the ZX,ZY plane and C-axis by adjust screws on Leveling Base 3D. Maximum tightening torque: 15Nm



53092

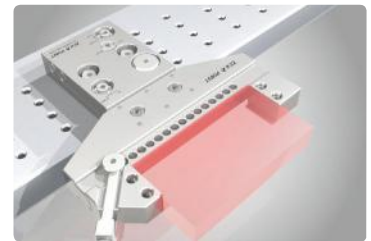
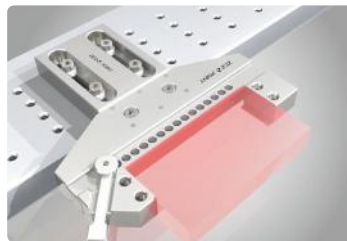
EWCE150

Leveling Wire EDM Vise



Features:

- ▶ One movable and one fixed jaw, ground and corrosion-resistant.
 - ▶ Lateral clamping of workpieces of 0-150mm machined from the outside.
 - ▶ To be fitted to the Fix base C or Leveling base 3D.
 - ▶ Range: 0~150mm
 - ▶ Max. Load 10kg
 - ▶ With Fix base; Adjustable in the ZX and ZY plane using six pieces of screws.
 - ▶ With Leveling Base: Adjustable in the ZX,ZY plane and C-axis by adjust screws on Leveling Base 3D.
- Maximum tightening torque : 10Nm

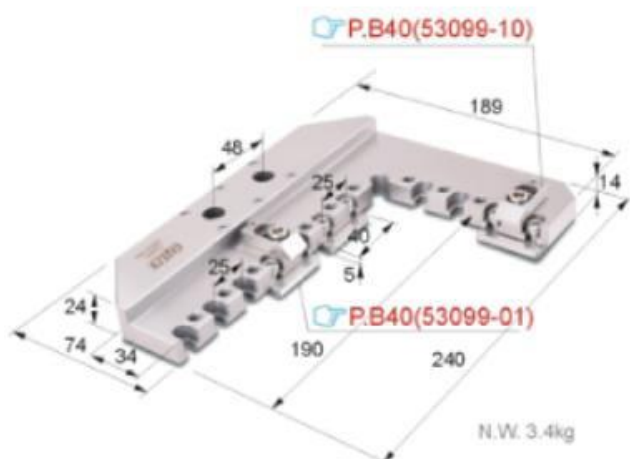


WIRE EDM EXTENSIONS CLAMP

53093

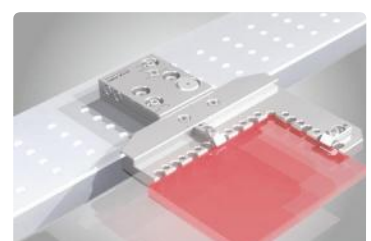
EWCE190

Leveling Wire EDM Vise



Features:

- ▶ Universal holder for collision-free clamping of rectangular and cylindrical workpieces.
- ▶ Bottom level of workpiece: Z=0 or +5mm
- ▶ To be fitted to the fix base C or Leveling base 3D.
- ▶ Range: 200X125X100mm, Ø200mm
- ▶ Max. Load 10kg
- ▶ With Fix base; Adjustable in the ZX and ZY plane using six pieces of screws.
- ▶ With Leveling Base: Adjustable in the ZX,ZY plane and C-axis by adjust screws on Leveling Base 3D.



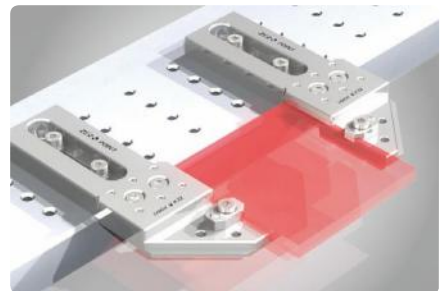
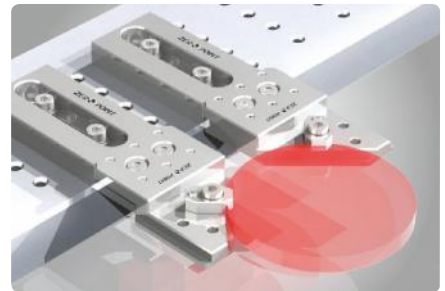
Wire EDM Extensions Clamp

53094-01 EWC45R >> Leveling Clamp

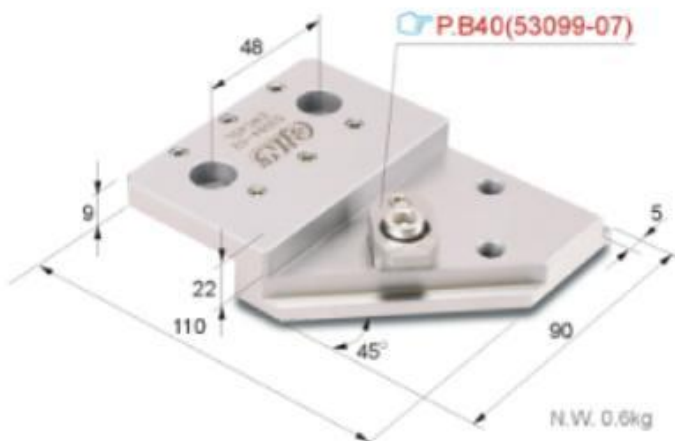


Features:

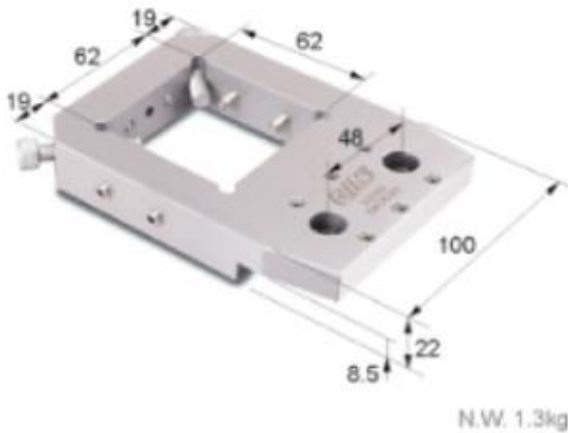
- ▶ Clamping element with clips for one-sided attachment to workpieces.
- ▶ Bottom level of workpiece: Z=0 or +5mm Usually, it is used in combination with XXX
- ▶ To be fitted to the fix base B.
- ▶ Max. Load 4kg
- ▶ Adjustable in the ZX and ZY plane using six pieces of screws.



53094-02 EWC45L >>



53095 EWCR060 Leveling Clamp



Features:

- ▲ Clamp for round and cubic workpieces of up to 60mm
- ▲ To be fitted to the Fix base C or Leveling base 3D.
- ▲ Range: Ø60mm or 60×60mm
- ▲ Max. Load 5kg
- ▲ With Fix base; Adjustable in the ZX and ZY plane using six pieces of screws.
- ▲ With Leveling Base: Adjustable in the ZX,ZY plane and C-axis by adjust screws on Leveling Base 3D.



WIDE COLUMN EXTENSIONS CLAMP

53096 EWCR170 Leveling Clamp



Features:

- ▲ Prism and clamping bars with detachable Z-supports.
- ▲ To clamp cylindrical workpieces of up to Ø170mm
- ▲ To be fitted to the fix base C or Leveling base 3D.
- ▲ Range: Ø170mm
- ▲ Max. Load 10kg
- ▲ With Fix base; Adjustable in the ZX and ZY plane using six pieces of screws.
- ▲ With Leveling Base: Adjustable in the ZX,ZY plane and C-axis by adjust screws on Leveling Base 3D.



Wire EDM Extensions Clamp

53097-01 EWCH55 >> Leveling Clamp



Features:

- ▲ Vise with detachable Z-supports and jaws fitted from above.
- ▲ To clamp workpieces of up to 65mm in height.
- ▲ To be fitted to the Leveling base 3D.
- ▲ Range: 150×150×65mm
- ▲ Max. Load 10kg
- ▲ Adjustable in the ZX,ZY plane and C-axis by adjust screws. on the Leveling Base 3D.



WIRE EDM

53097-02 EWCH95 >> Leveling Clamp

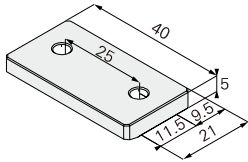


Features:

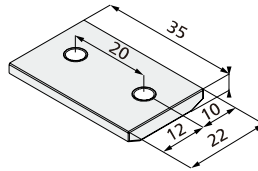
- ▲ Vise with detachable Z-supports and jaws fitted from above.
- ▲ To clamp workpieces from 45mm to 120mm in height.
- ▲ To be fitted to the Leveling base 3D.
- ▲ Range: 150×150×120mm
- ▲ Max. Load 10kg
- ▲ Adjustable in the ZX,ZY plane and C-axis by adjust screws. on the Leveling Base 3D.



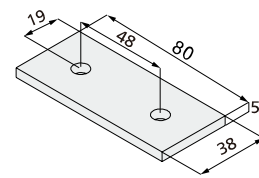
53099-01 EW41



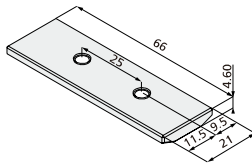
53099-02 EW42



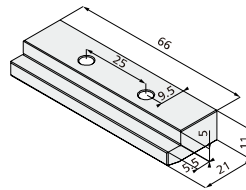
53099-03 EW43



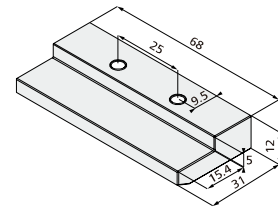
53099-04 EW44



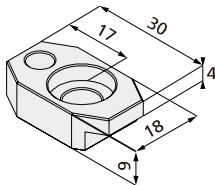
53099-05 EW51



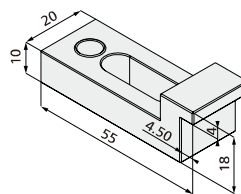
53099-06 EW52



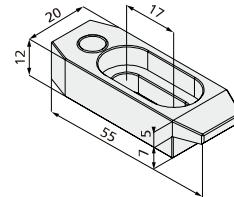
53099-07 EW53



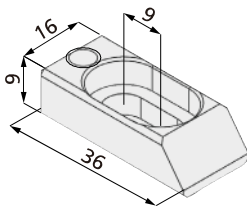
53099-08 EW54



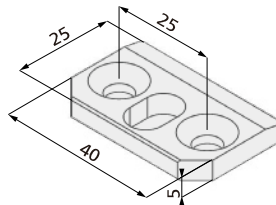
53099-09 EW55



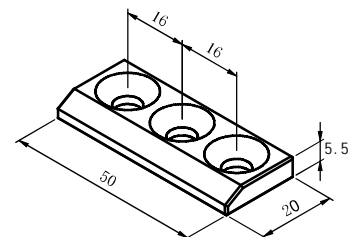
53099-10 EW56



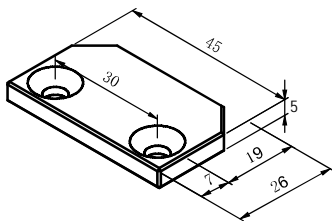
53099-11 EW57



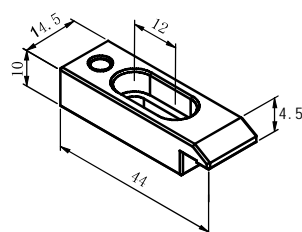
53099-12 EW61



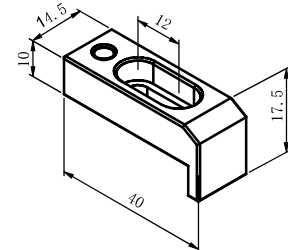
53099-13 EW62



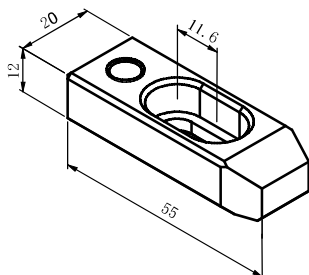
53099-14 EW63



53099-15 EW64



53099-16 EW65



53099-17 EW66

